



THE UCLA CENTER FOR HEALTH POLICY RESEARCH



Housing for Health: Perspectives of Multiple Stakeholders

Kathryn G. Kietzman, PhD, MSW



Presenter Disclosures

Kathryn Kietzman

- (1) The following personal financial relationships with commercial interests relevant to this presentation existed during the past 12 months:**

No relationships to disclose

Acknowledgments

Support for this presentation was provided by the

Robert Wood Johnson Foundation

through the Systems for Action National
Coordinating Center, ID 73693

The views expressed here do not necessarily reflect
the views of the Foundation.

Collaborators

UCLA Center for Health Policy Research

- Kathryn G. Kietzman
- Alina Palimaru
- Adrian M. Bacong
- Brenda Gutierrez
- Elaine Miao
- Nadereh Pourat

Los Angeles County Department of Public Health

- Emily Caesar
- Will Nicholas
- Irene Vidyanti
- Faith Washburn
- Lisa Greenwell
- Ricardo Basurto-Davila

Los Angeles Department of Health Services

- Whitney Lawrence
- Leepi Shimkhada

Study Context

Homelessness in Los Angeles County

Count in 2018 = 52,765 individuals

Health and Homelessness

Housing for Health: *“Whatever it Takes”*

- Permanent Supportive Housing (PSH)
- Rental subsidies

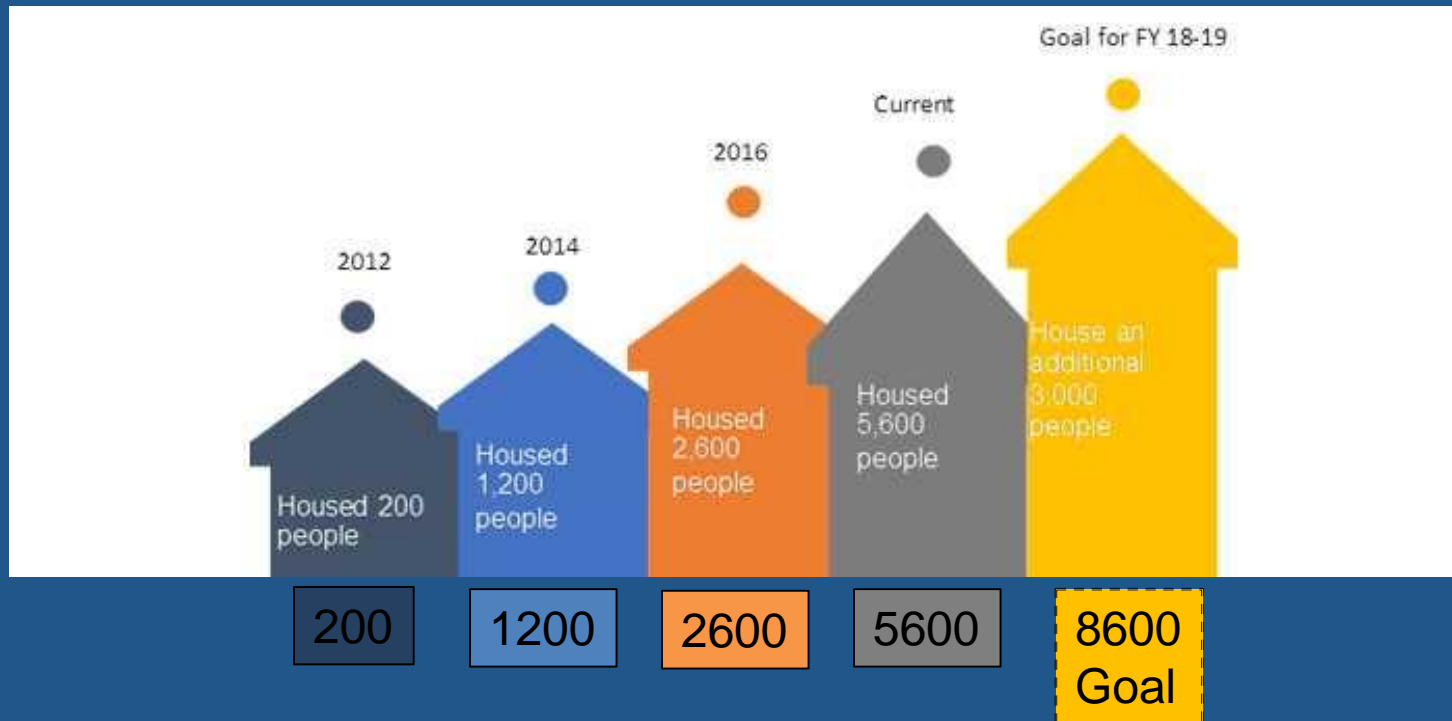
Housing for Health (HFH)



<http://dhs.lacounty.gov/wps/portal/dhs/housingforhealth>



HFH: Housing success to date



<http://dhs.lacounty.gov/wps/portal/dhs/housingforhealth>

Study Aims

- Evaluate effectiveness of Housing For Health (HFH)'s approach to permanent supportive housing (PSH)
- Assess HFH's impact on service utilization and outcomes in other sectors
- Document perspectives of PSH stakeholders: tenants, providers, & program administrators

Mixed Methods Study Design

■ Quantitative

- Administrative data from six LAC departments, HFH
- and other PSH programs
- Electronic health records from DHS
- Survey of HFH and non-HFH clients

➤ Qualitative

- Key Informant interviews
- Focus Groups with tenants and providers

Tenant Focus Groups

PARTICIPANT CHARACTERISTICS (N=42)	
Gender (male)	24 (57%)
Age (range)	Mean=57 (28-71 years)
Race/Ethnicity	
Black/African American	14 (33%)
White/Caucasian	14 (33%)
Hispanic/Latino	8 (19%)
Asian	2 (5%)
American Indian	2(5%)
Unknown	2(5%)

Tenant Focus Groups

PARTICIPANT CHARACTERISTICS (N=42)	
Type of PSH	
Housing For Health	25 (60%)
Other PSH	17 (40%)
Housing Site	
Project-based	19 (45%)
Scattered	18 (43%)
Unknown	5 (12%)

Provider Focus Groups

PARTICIPANT CHARACTERISTICS (N=29)	
Gender (n=26, male)	13 (50%)
Age (n=24, range)	Mean=37 (24-60 years)
Race/Ethnicity	
Hispanic/Latino	12 (41%)
White/Caucasian	10 (34%)
Black/African American	5(17%)
Unknown	2 (7%)

Provider Focus Groups

PARTICIPANT CHARACTERISTICS (N=29)	
Type of PSH (n=28)	
Housing For Health	12 (43%)
Other PSH	9 (32%)
Both	7 (25%)
Housing Site (n=28)	
Project-based	10 (36%)
Scattered	8 (29%)
Both	10 (36%)

Data Analysis

- Interviews and focus groups audio-recorded and transcribed
- Independently coded by 2 team members
- Codes developed inductively
- Patterns and themes identified

HFH-specific differences

- Dedicated service dollars
- Intensive case management services
- Enhanced housing placements and referrals
- Streamlined reporting and administrative processes

Dedicated Service Dollars

I think what the Housing For Health did was provide services, service dollars... that was not really there. It was never dedicated to Permanent Supportive Housing. It was kind of developers were doing it and trying to piece it together...

Key Informant

Barriers to Housing Stabilization

- Systems-level: limited funding, housing, and human resources
- Administrative: burdensome data collection and reporting requirements
- Workforce capacity: insufficient staffing, case manager turnover, conflicting goals
- Individual-level: broad spectrum of tenant needs

Limited Housing Inventory

Especially when you're on Section 8, the locations in which the apartments are located in are usually run-down and oftentimes or what I have noticed is for example say someone has a substance abuse problem, nine times out of ten they're put back into the same environment only because that's the only place available where they'll accept a Section 8...

Tenant Focus Group Participant

Broad Spectrum of Tenant Needs

They were so eager to fill up these buildings and this is what you guys need to be careful of. They sent people who were not able to live on their own into an environment where they had to live on their own, just to get the numbers, just to get that hundred units filled... If you can't get out of the bed it's unlikely you're going to participate in groups. You know, if you're in constant pain, you know, you're not going to get to meet a friend that can help you in case of emergencies.

Tenant Focus Group Participant

Facilitators to Housing Stabilization

- Enhanced linkages and referrals between housing and services
- Partnerships and collaborations
- Co-locating supportive services
- Intensive case management services
- Tenants organizations

Enhanced Linkages and Referrals

It starts with street outreach services that are connected to them, interim housing and shelter beds that Housing For Health directly buys and operates, to housing location services that they offer and then finally with the housing that is available and if someone drops out of that, they have access to clinical supports, uniquely provided by the health agency as well as shelter beds that they can kind of drop back into for replacement into other places. So the safety net, the directly operated safety net and support system into the safety net under it is I'd say dramatically more coordinated and aligned, by virtue of it being a single funder.

Key Informant

Implications for Policy and Practice

HFH has been a catalyst for change in the financing and administration of PSH programs in Los Angeles.

Rapid scaling has been responsive to housing needs while introducing some tensions related to provider capacity and tenant level of need.

Housing is not the end-goal: keeping individuals housed and connected to services is critical for long-term success.

Moving beyond Housing

When we think of Permanent Supportive Housing, we've always thought of it in the context of housing development, sort of like a building. But um, but I think we're having to expand that definition because service providers are also responsible to provide the services for people who get like tenant-based vouchers.

Key informant

[We want to] make sure we haven't missed anything because if somebody would much more benefit from, you know, a different type of programming, or housing, we wanna make sure we've attached them to anything that we possibly can that they're comfortable with...

Key Informant

Community Partners

LifeSTEPS Broadway Villas

LifeSTEPS Hollenbeck Terrace

Skid Row Housing Trust

Step Up on Colorado

LA Family Housing

Abbey Apartments

The Russ Hotel

LAMP

PATH

Homeless Healthcare Los Angeles

With special thanks to all of the tenants!

Thank You!

For more information, contact:

Kathryn G. Kietzman

kietzman@ucla.edu