

Systems Alignment to Optimize Health among Youth Experiencing Homelessness

Research-in-Progress Webinar Series
March 27, 2024
12-1pm ET



colorado school of
public health



- 1. Overview of Our Systems Alignment Research**
2. Systems Alignment Strategies
 - Trainings
 - Youth Health Connect
 - Mental Health Supports
 - Site-based Health Services
3. Data Systems Alignment
4. Next Steps
5. Q&A

Presenters: Youth Health and Housing Lab

The Youth Health and Housing Lab leads community-engaged, youth-driven multisector work at the intersection of housing, healthcare and public health to optimize health and bolster resilience among youth experiencing homelessness.



Scan for our website!



Photo by [Nathan Dumlao](#) on [Unsplash](#)

4.2 million

Youth experience homelessness annually in the U.S.

Running away

Being thrown out

Rough sleeping

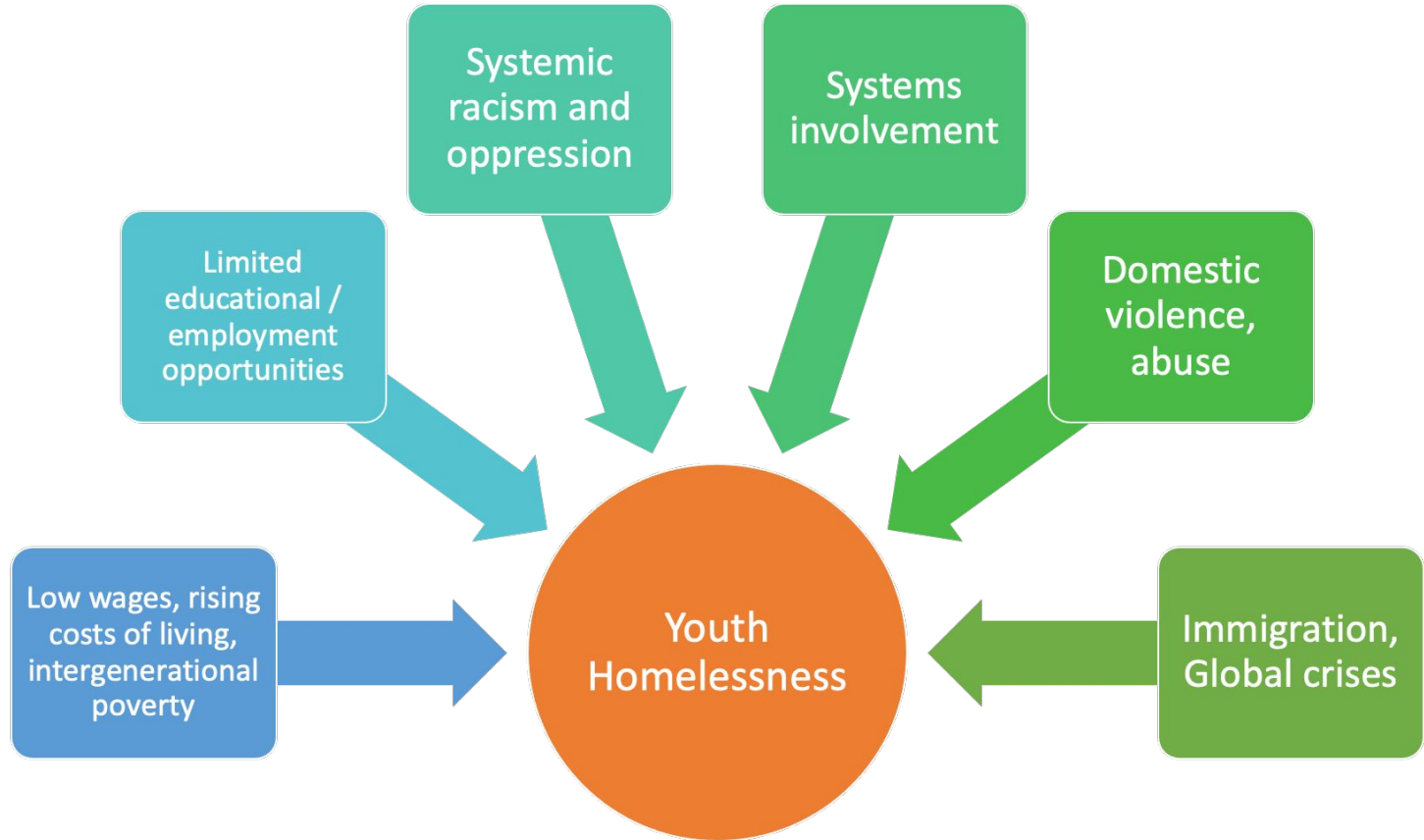
Staying in shelter

Couch-surfing

Background



Background



Key Frameworks



Strengths-based



Youth-centered



Anti-oppressive



Community-
engaged



Trauma-informed



Harm
reduction

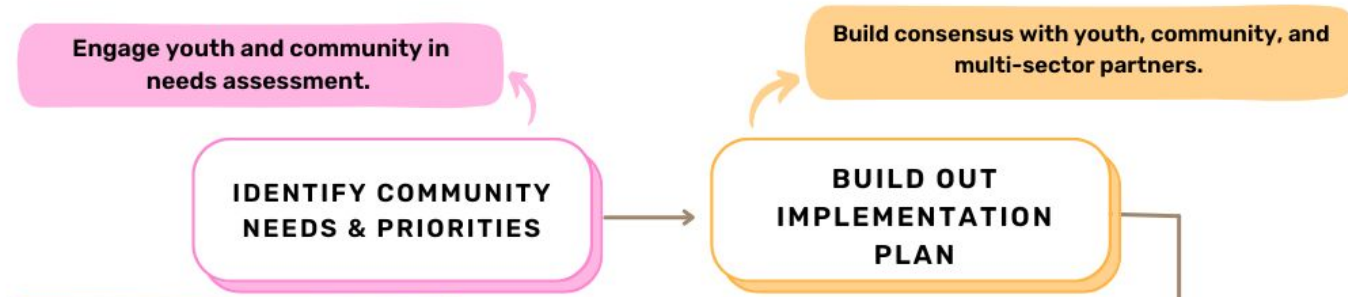


Youth Participatory Action Research

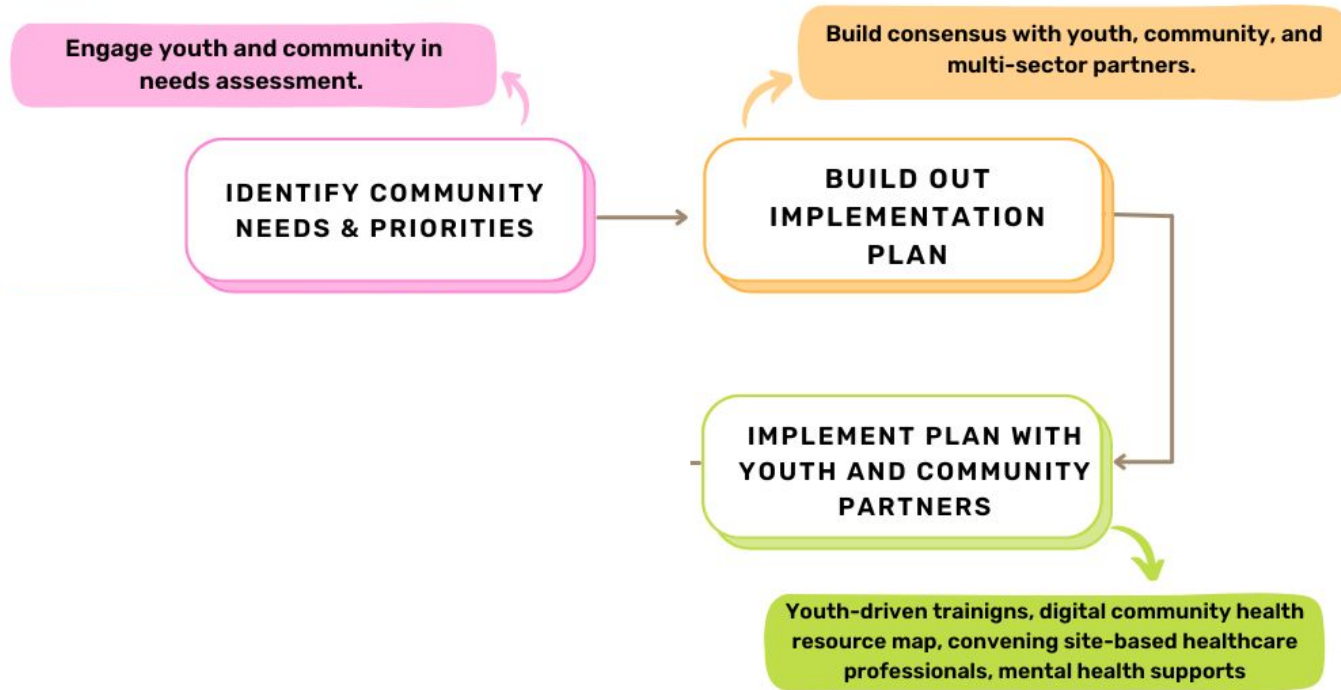
Engage youth and community in
needs assessment.

**IDENTIFY COMMUNITY
NEEDS & PRIORITIES**

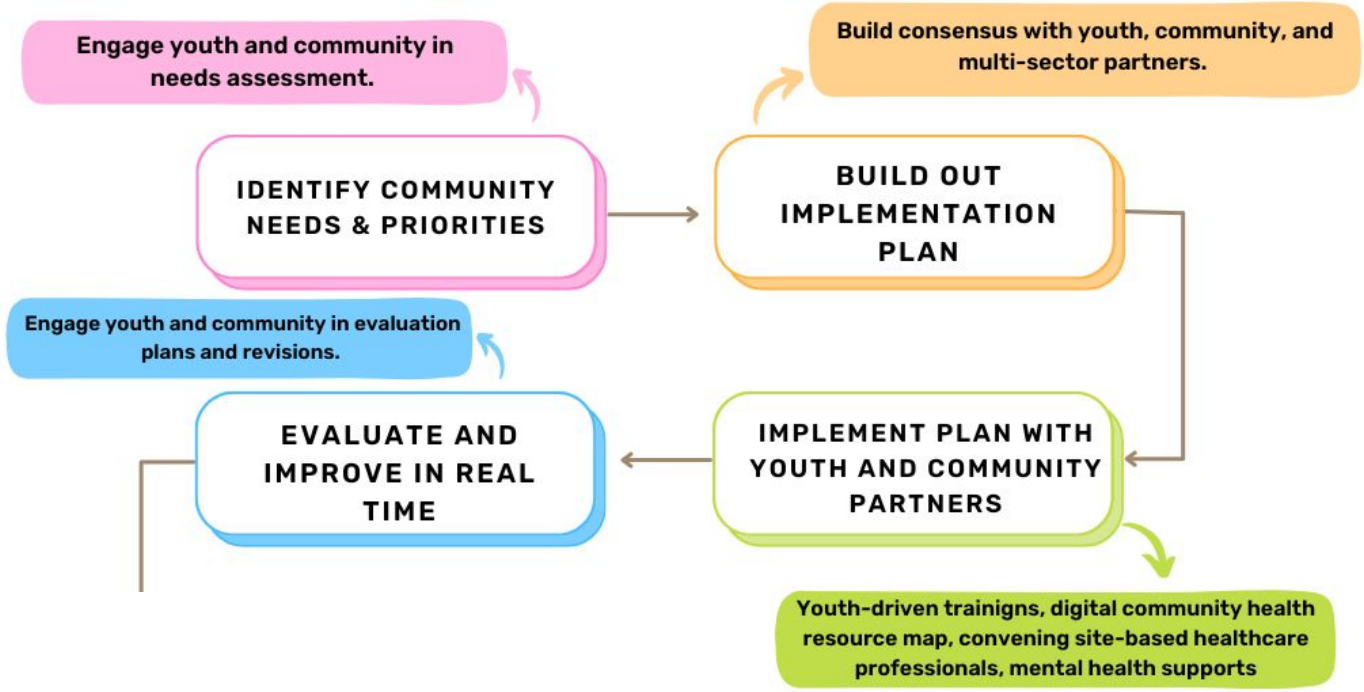
Project Overview: Youth-driven Systems Alignment



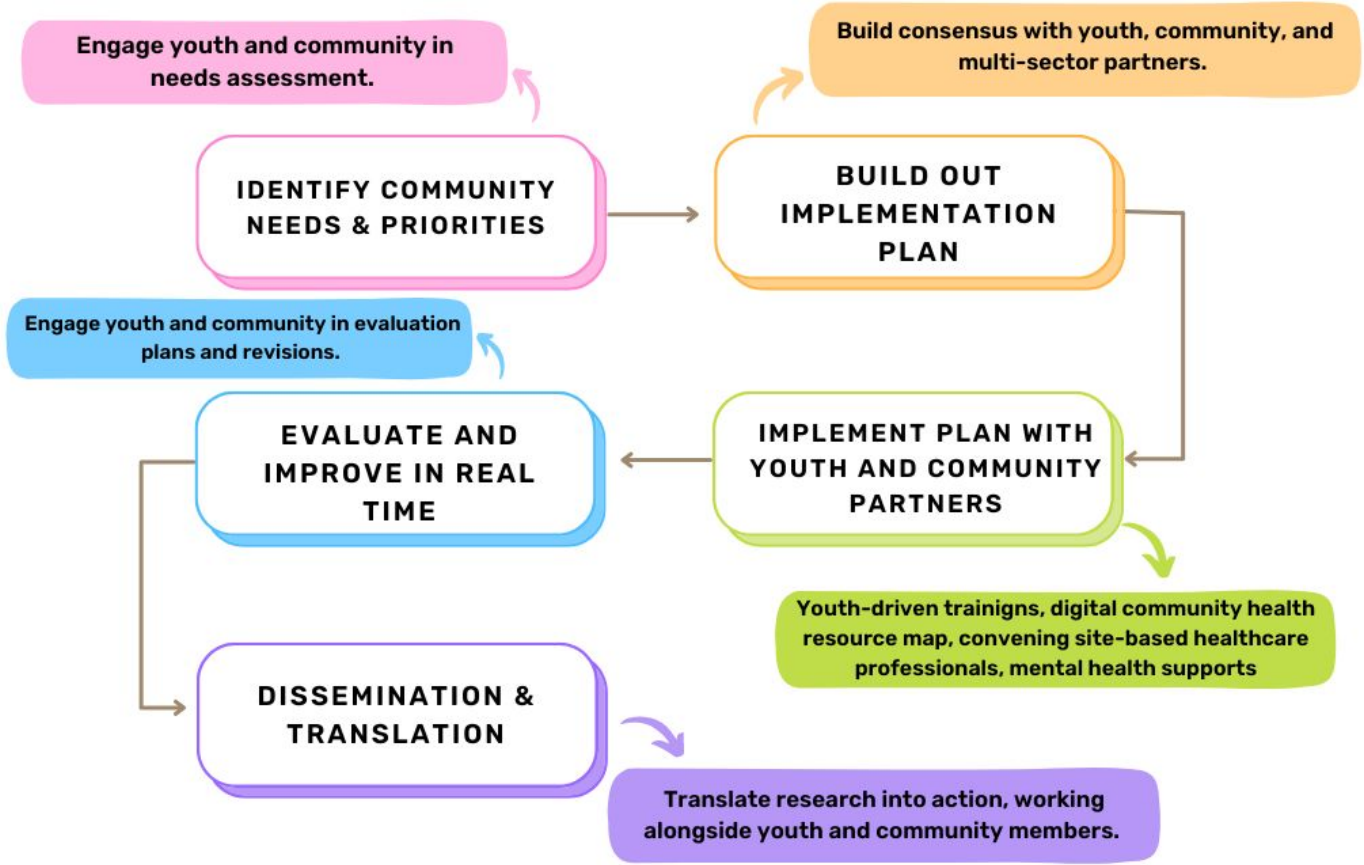
Project Overview: Youth-driven Systems Alignment




Project Overview: Youth-driven Systems Alignment



Project Overview: Youth-driven Systems Alignment



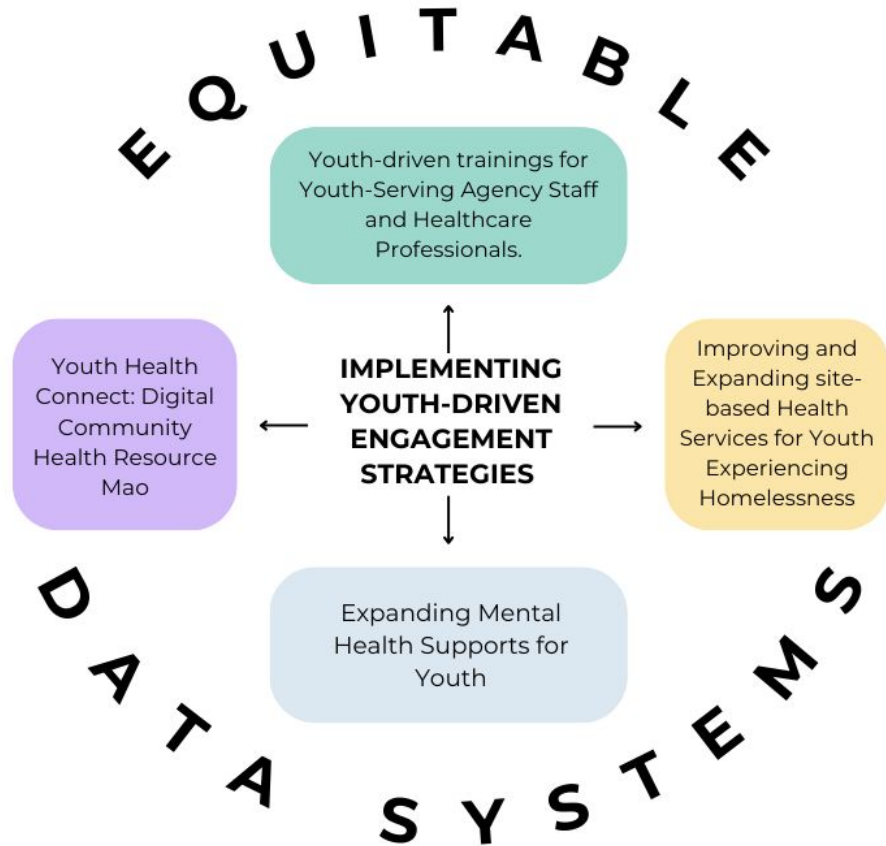
A top-down view of a group of people's hands stacked in a circle, symbolizing unity and collaboration. Many hands are wearing blue wristbands with the text 'EMFAS' on them. The background is dark, and the overall mood is one of solidarity and shared purpose.

What does it look like
from your perspective for youth
and others with lived experiences
to meaningfully engage in research
and why is it important?

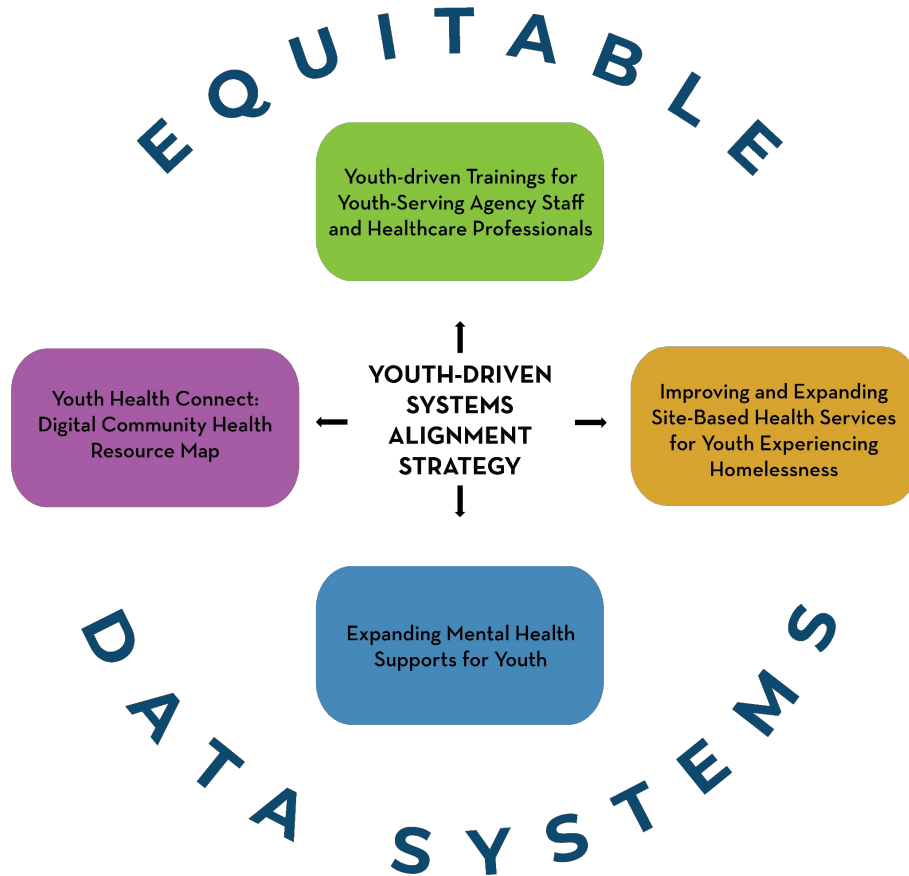


1. **Overview of Our Systems Alignment Research**
2. Systems Alignment Strategies
 - Trainings
 - Youth Health Connect
 - Mental Health Supports
 - Site-based Health Services
3. Data Systems Alignment
4. Next Steps
5. Q&A

Systems Alignment Strategies

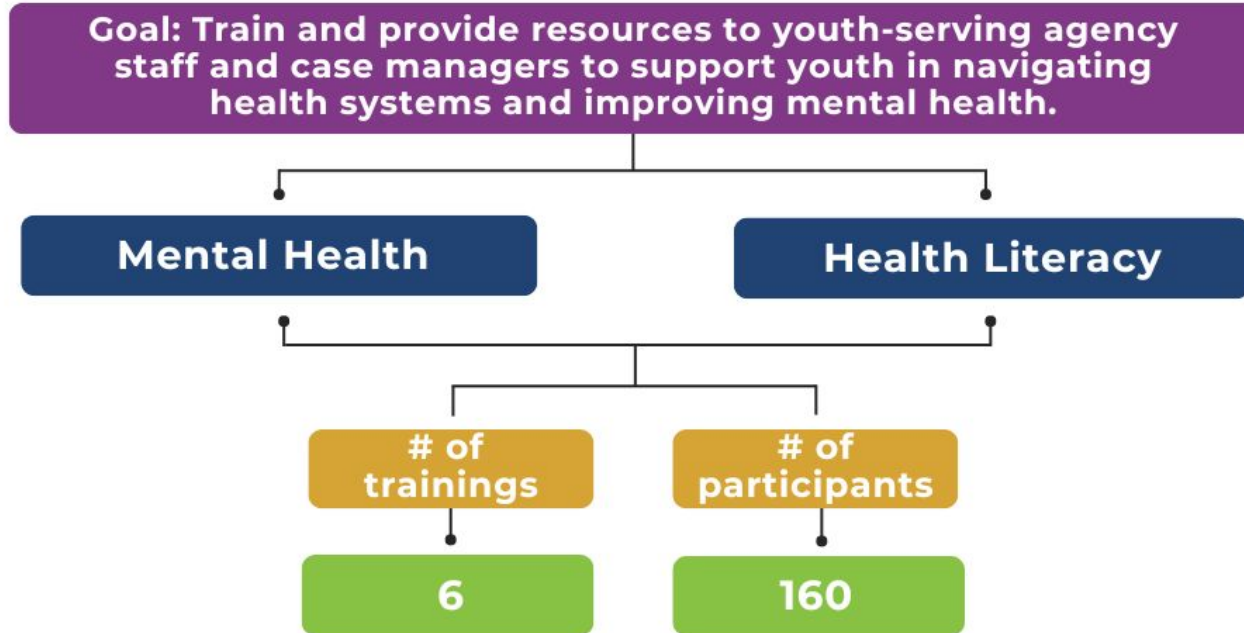


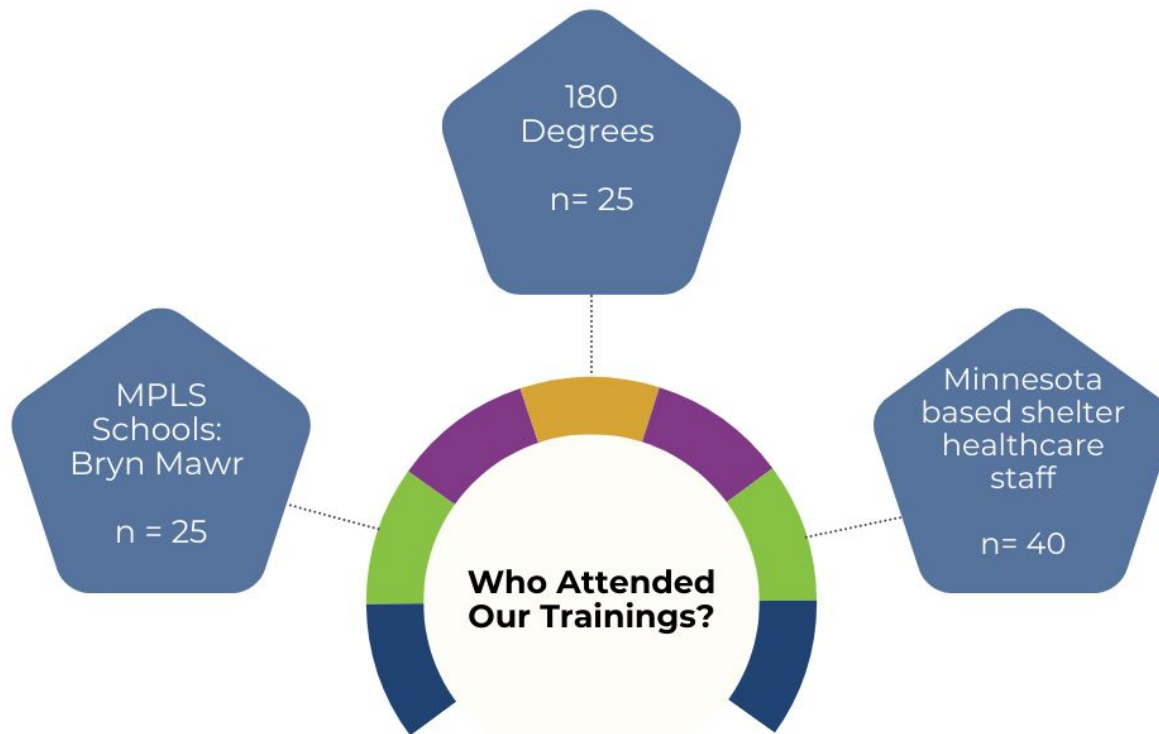
Systems Alignment Strategies





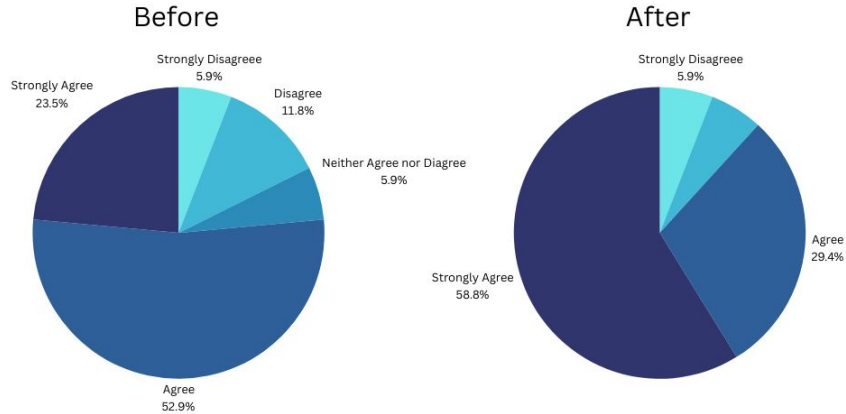
1. Overview of Our Systems Alignment Research
2. **Systems Alignment Strategies**
 - **Trainings**
 - Youth Health Connect
 - Mental Health Supports
 - Site-based Health Services
3. Data Systems Alignment
4. Next Steps
5. Q&A



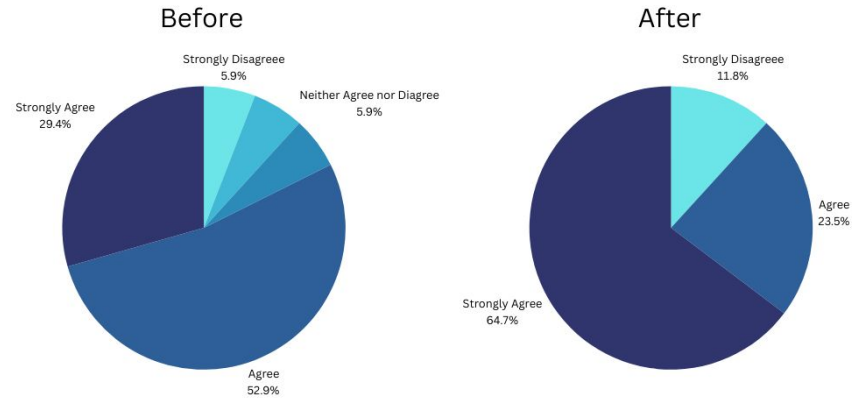


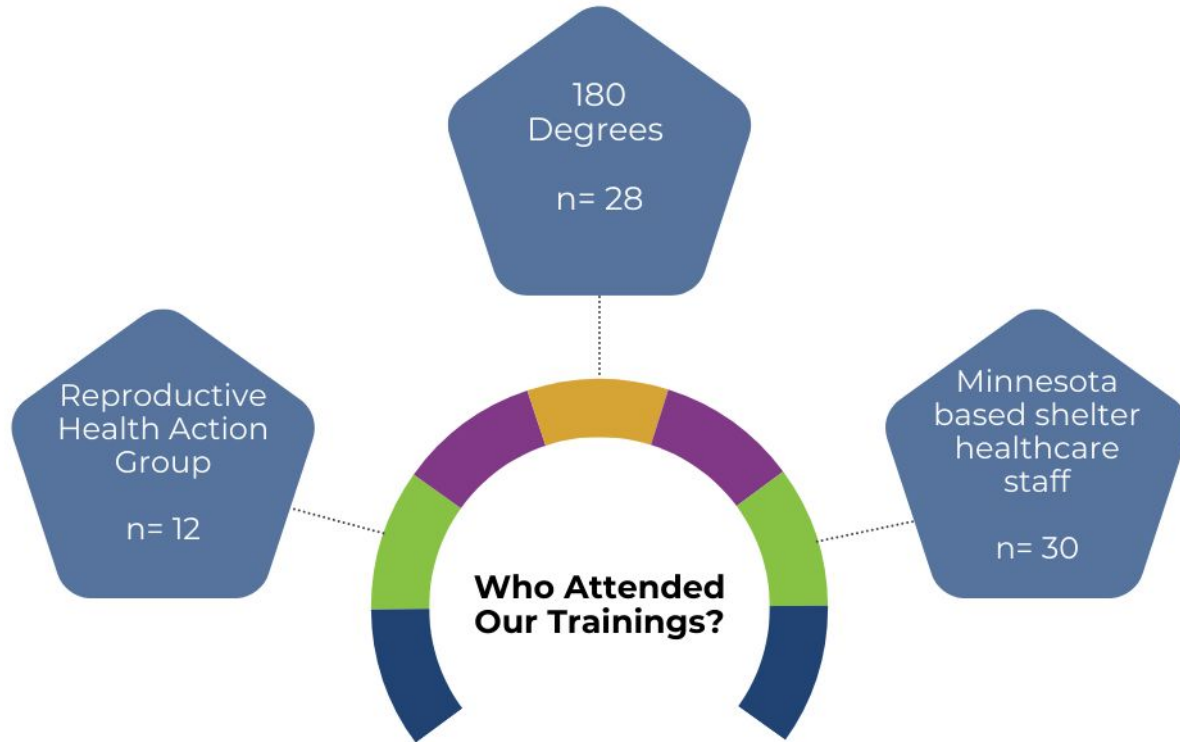
Systems Alignment Strategy: Mental Health Trainings

I feel confident applying a trauma-informed approach in my work.



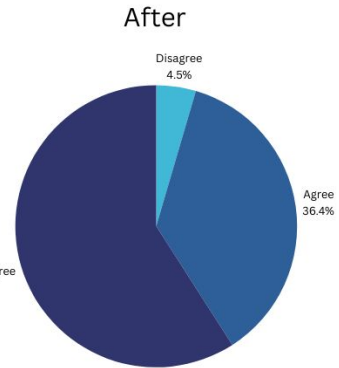
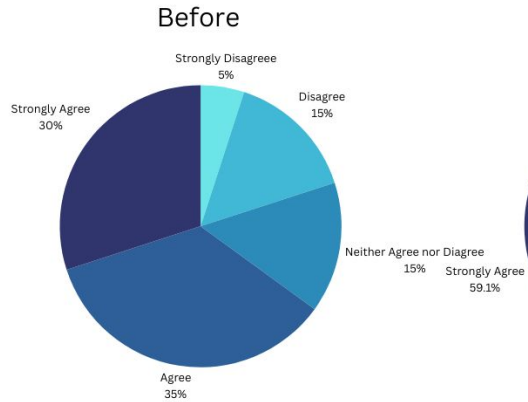
I can identify strategies to best support youth in improving their mental health.



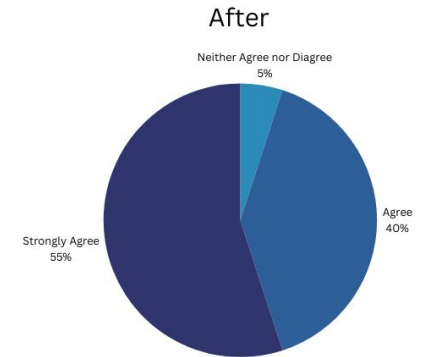
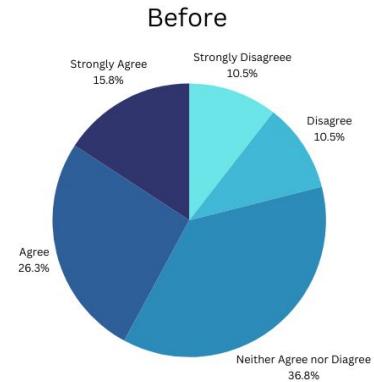


Systems Alignment Strategy: Health Literacy Trainings

I feel confident helping youth navigate the healthcare system



I can identify several strategies to support youth health literacy





What was it like participating
in the trainings?

What do you think were the most important
take-home points from the trainings?

Roadmap



1. Overview of Our Systems Alignment Research
2. **Systems Alignment Strategies**
 - Trainings
 - **Youth Health Connect**
 - Mental Health Supports
 - Site-based Health Services
3. Data Systems Alignment
4. Next Steps
5. Q&A

Idea for Youth Health Connect
comes out of focus groups with
youth and YSA staff



Digital Community Health Resource Map



Has anyone had experience with web design or know anyone that is experienced in web design?

Make website printable!

Adding an awareness section where we can include icons that are coded to specific warnings for points of care

Make sure we are NOT including the fake pregnancy care places as

Chat forum capabilities to be able to connect with individuals who are also using the website

What other features would you like to see?

Tips for healthcare navigation / take a pic of your health insurance card, bring ID (if you have one), know your rights)

Could include contact information for designated youth representatives by geographic area for youth to be able to reach out to and get advice prior to going to a point of care

Section on the website: "know your rights" info section

Rating section (yelp style) for youth to be able to input reviews and comments

Systems Alignment Strategy: Youth Health Connect

Idea for Youth Health Connect comes out of focus groups with youth and YSA staff

Resource collection begins with reaching out to healthcare locations across the twin cities and documenting their services

Systems Alignment Strategy: Youth Health Connect

Idea for Youth Health Connect comes out of focus groups with youth and YSA staff

Website buildout and initial dissemination begins

Resource collection begins with reaching out to healthcare locations across the twin cities and documenting their services



Systems Alignment Strategy: Youth Health Connect



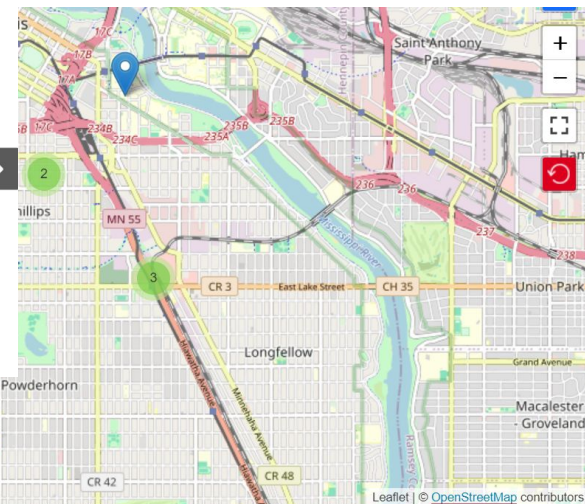
Youth Health Connect

[Home](#) [About](#) [Explore Map](#) [My Healthcare Rights](#) [Contact Us](#)



Welcome to Youth Health Connect!

A tool designed to bridge the gap between youth experiencing homeless and public health services in the Twin Cities metro area.

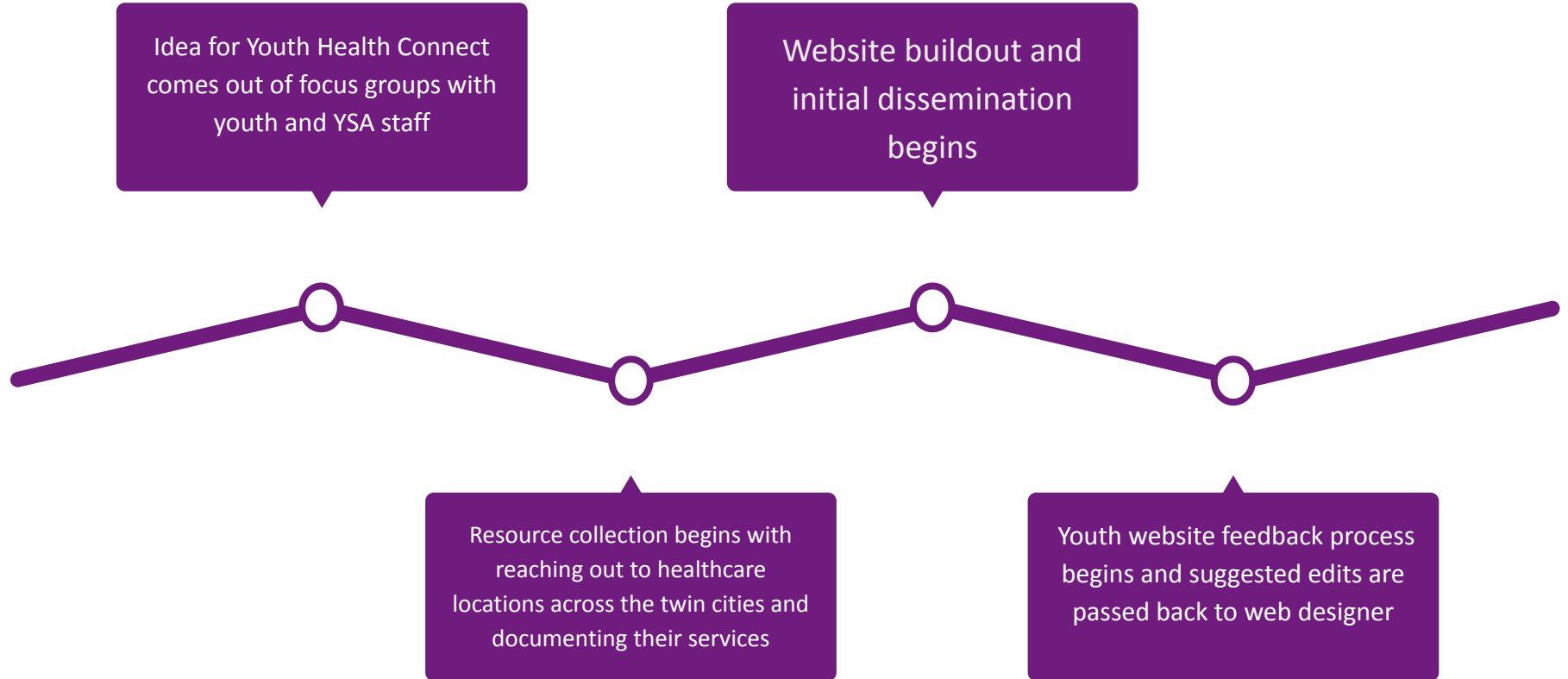


[Back to top](#) ^

Explore resources with ease by selecting from filters

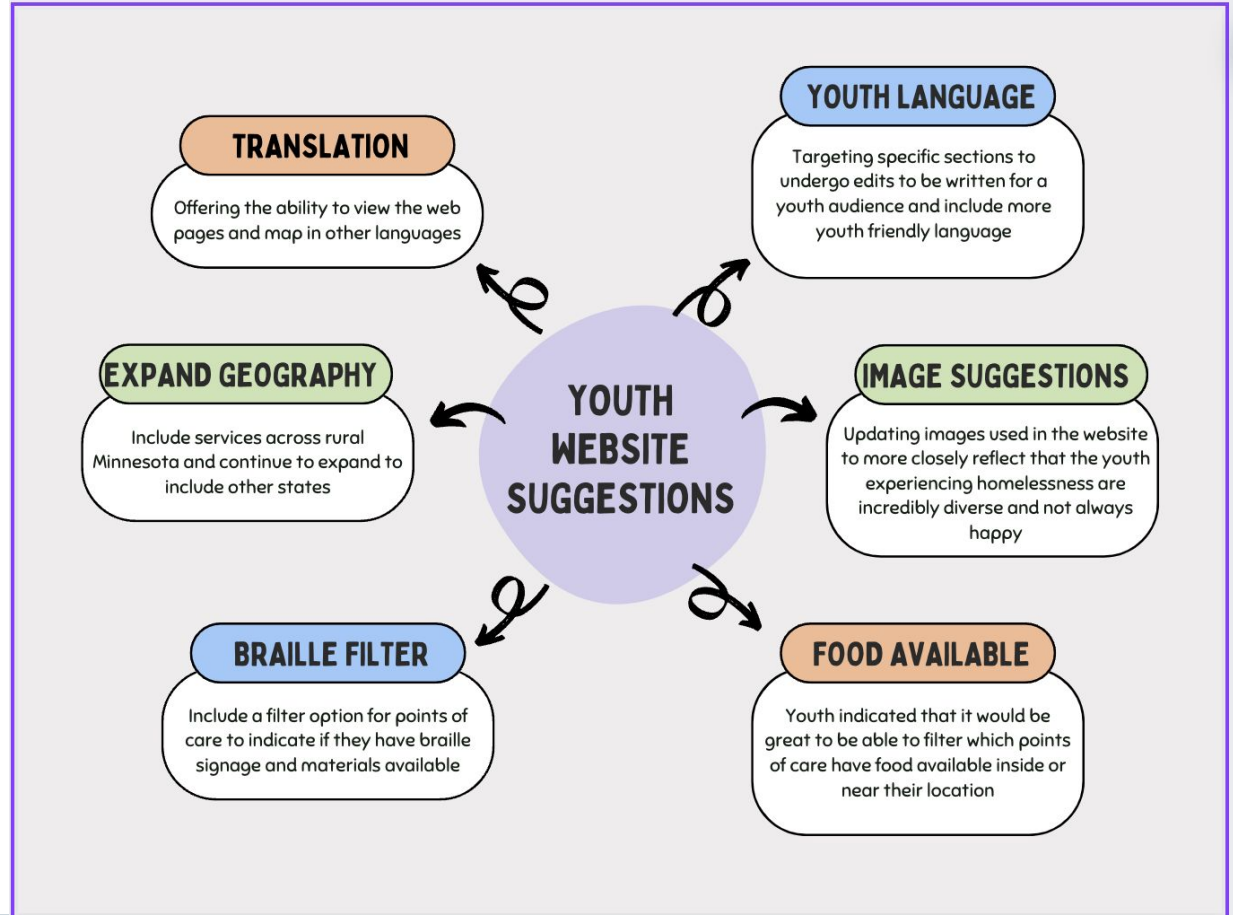
Simply choose a category to refine your search and view resources as a comprehensive list tailored to your needs.

Systems Alignment Strategy: Youth Health Connect



Pilot Testing:

- 6 Youth
 - 4 Hours Each





What do you think of
YouthHealthConnect?

What do you think the impact will be
on youth you know?



1. Overview of Our Systems Alignment Research
2. **Systems Alignment Strategies**
 - Trainings
 - Youth Health Connect
 - **Mental Health Supports**
 - Site-based Health Services
3. Data Systems Alignment
4. Next Steps
5. Q&A

Youth, youth serving agency staff, and cross-sector team identified need for mental health supports at youth serving agencies

+

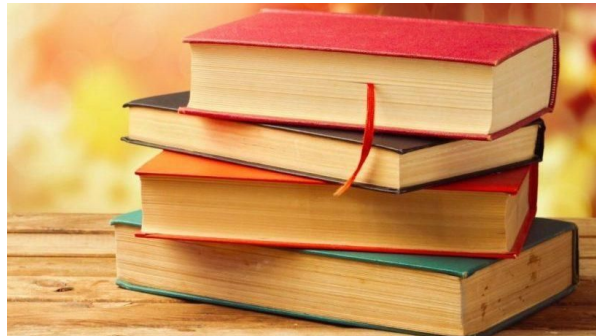
Co-generate list of mental health supports with youth for youth serving agency staff to choose from

→

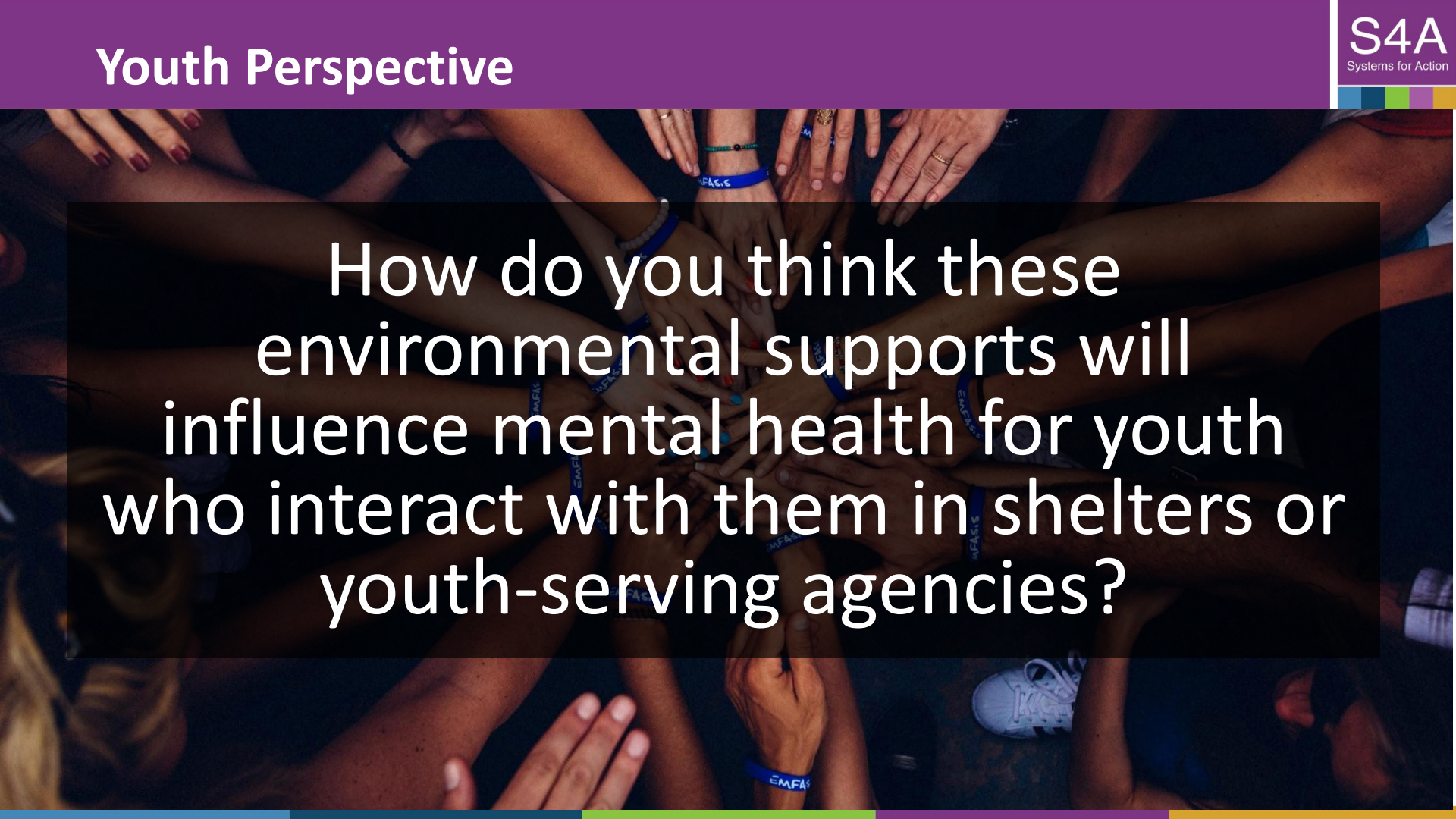
Purchased supports for Youth Serving Agencies:

- 4 urban YSA's
- 2 rural YSA's

Systems Alignment Strategy: Mental Health Supports



- Current pilot testing: 6 youth-serving agencies (4 urban, 2 rural)
- Interviews with YSA staff to understand how supports are being utilized and their impact
- Youth focused feedback on the feasibility, acceptability and potential benefits of these interventions

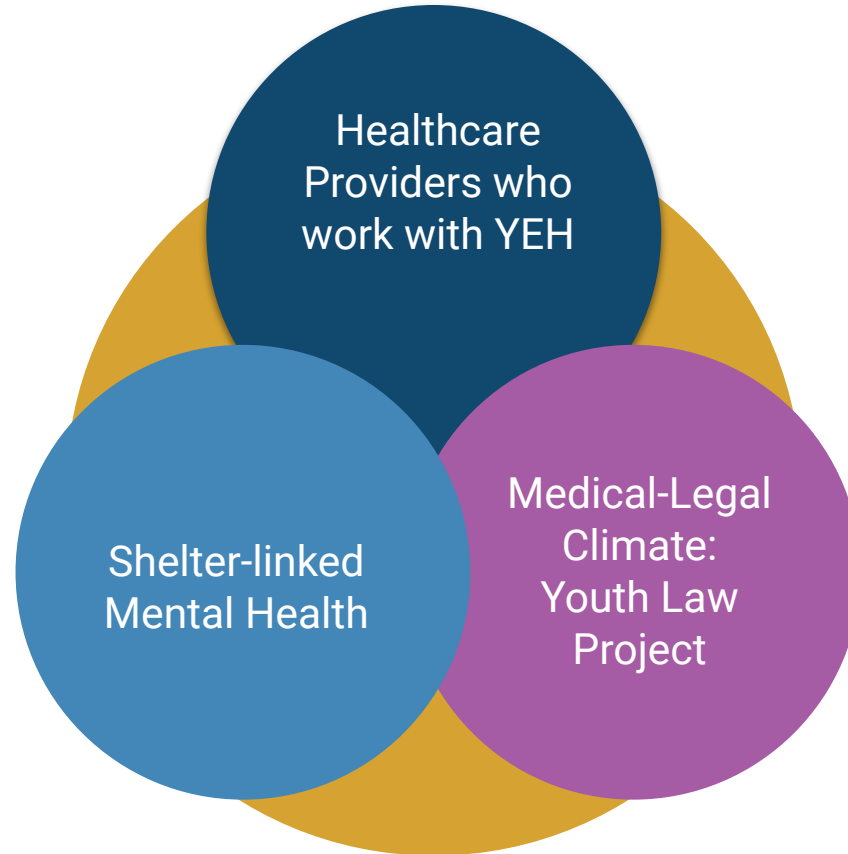


How do you think these environmental supports will influence mental health for youth who interact with them in shelters or youth-serving agencies?

Roadmap



1. Overview of Our Systems Alignment Research
2. **Systems Alignment Strategies**
 - Trainings
 - Youth Health Connect
 - Mental Health Supports
 - **Site-based Health Services**
3. Data Systems Alignment
4. Next Steps
5. Q&A





Why are shelter-based healthcare and mental health services important?

How do you think healthcare professionals working at youth-serving agencies could continue to collaborate to improve the care they provide?



1. Overview of Our Systems Alignment Research
2. Systems Alignment Strategies
 - Trainings
 - Youth Health Connect
 - Mental Health Supports
 - Site-based Health Services
3. **Data Systems Alignment**
4. Next Steps
5. Q&A

DATA SYSTEMS ALIGNMENT RECOMMENDATIONS REPORT

SUMMARY

**FOSTER RAMSEY/HENNEPIN
COUNTY PARTNERSHIP**

**CLARIFY MINOR CONSENT LAW AND
PRIVACY RIGHTS OF YOUTH**

LEVERAGE EXISTING DATA SETS

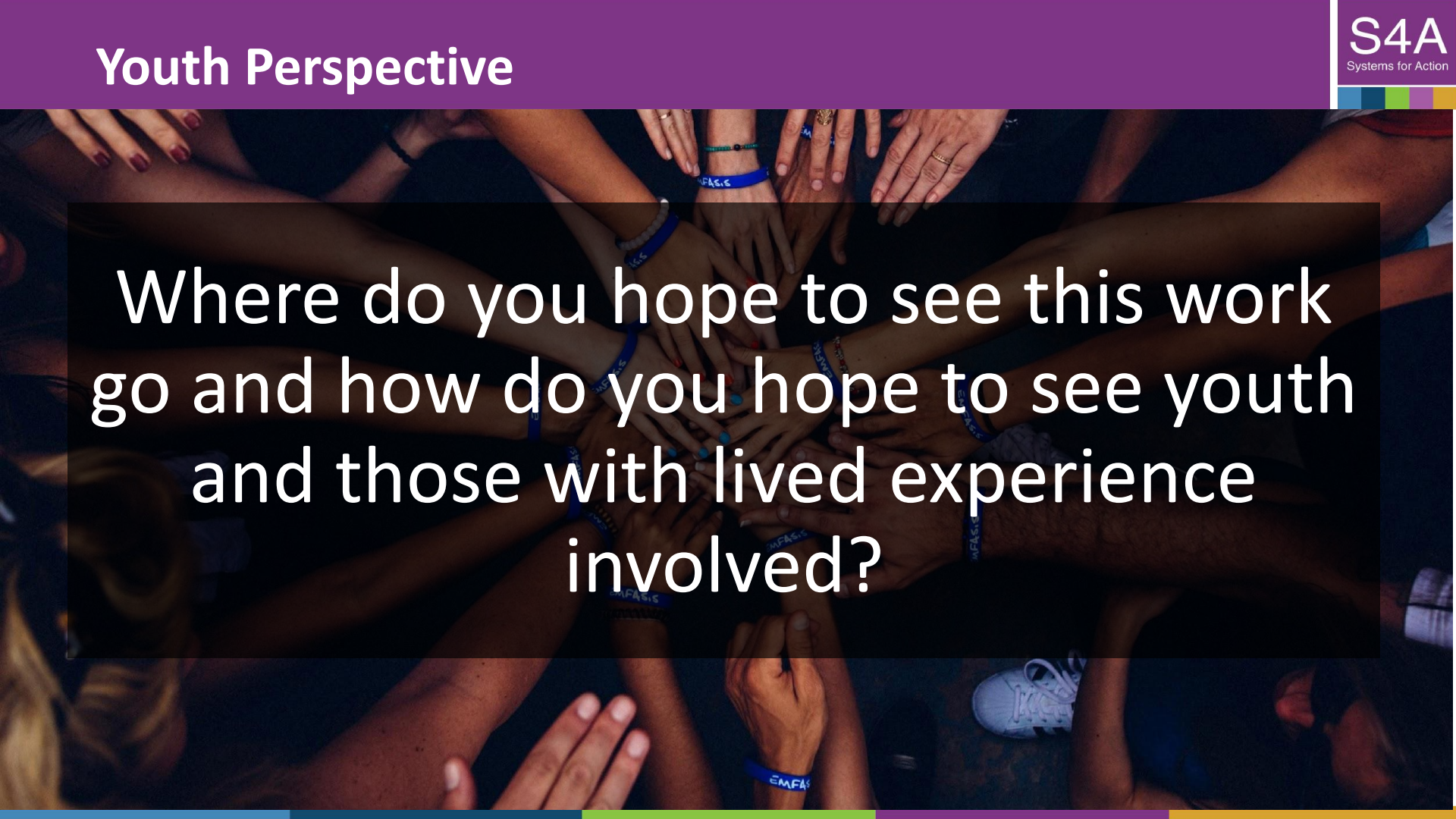
CENTER YOUTH VOICE IN DATA SYSTEMS

**TRANSPARENT, TRAUMA-INFORMED
HEALTH INTAKE AND HEALTHCARE
PROCESSES**

**ENSURE CLEAR INFORMATION
SHARING LIMITS**



1. Overview of Our Systems Alignment Research
2. Systems Alignment Strategies
 - Trainings
 - Youth Health Connect
 - Mental Health Supports
 - Site-based Health Services
3. Data Systems Alignment
4. **Next Steps**
5. Q&A



Where do you hope to see this work go and how do you hope to see youth and those with lived experience involved?

Next Steps



S4A

Systems for Action

Thank You! Questions?

UMN Youth Health and Housing Lab

Janna Gewirtz O'Brien, MD, MPH (PI)

Meghan Ford

Brandon Balma

Emma McGrew

Annie Lemieux

Zeinab Mohamud

Samantha LaBouef

Ly Baumgardt

Alexis Chan

Wren Kahl

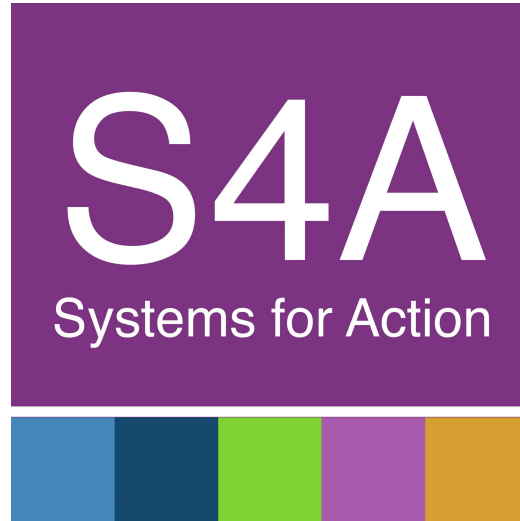
Casey Hokanson

Youth Leaders

University of Minnesota



Questions?



www.systemsforaction.org

 [@Systems4Action](https://twitter.com/Systems4Action)

If you would like to receive a **certificate of completion** for today's ResProg webinar, please complete the survey at the end of the session.

One will be emailed to you.

Research to Understand Systems of Housing (RUSH): Feasibility & Acceptability of Aligning Systems for Fathers

Wednesday, April 10 | 12pm ET

Systems for Action is a National Program Office of the Robert Wood Johnson Foundation and a collaborative effort of the Colorado School of Public Health, administered by the University of Colorado Anschutz Medical Campus, Aurora, CO.



Robert Wood Johnson
Foundation

colorado school of
public health