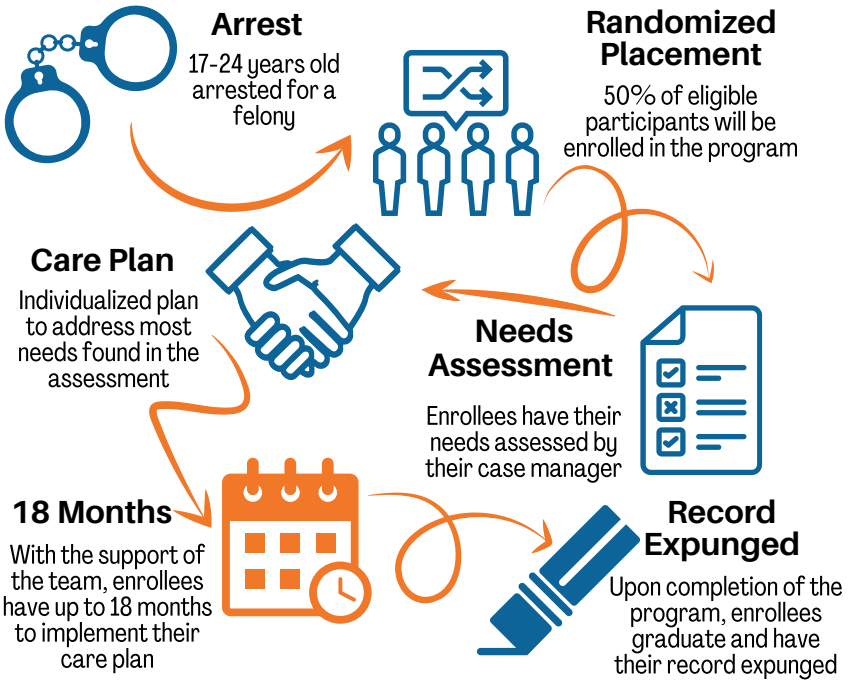


TRANSFORMATIVE JUSTICE OF WILLIAMSON COUNTY



WHAT HAPPENS IN THE CARE PLAN?

- Three Phases:
 - Assessment
 - Stabilization
 - Transformation
- Enrollees actively participate in the creation of their plan
- Regular check ins with case team and other enrollees

MOST COMMON SERVICES PROVIDED

- Substance Abuse Treatment
- Educational and GED Support
- Employment Assistance
- Job Training
- Access to Counseling
- Mentoring
- Assistance with Obtaining IDs
- Life Skills

This is part of an ongoing evaluation study funded by the Robert Wood Johnson Foundation (RWJF) under the Systems for Action (S4A) research program. The research team includes the Public Policy Research Institute (PPRI) at Texas A&M University, Access to Justice Lab at Harvard Law School, and the University of Texas Health Science Center at Houston.



To learn more about the program, visit www.tj-wc.org